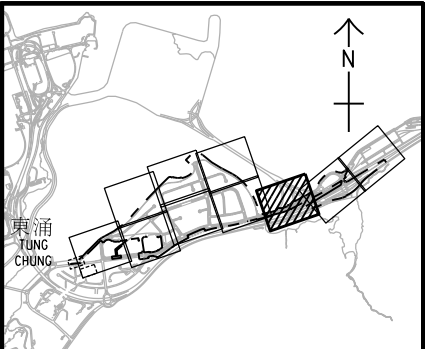
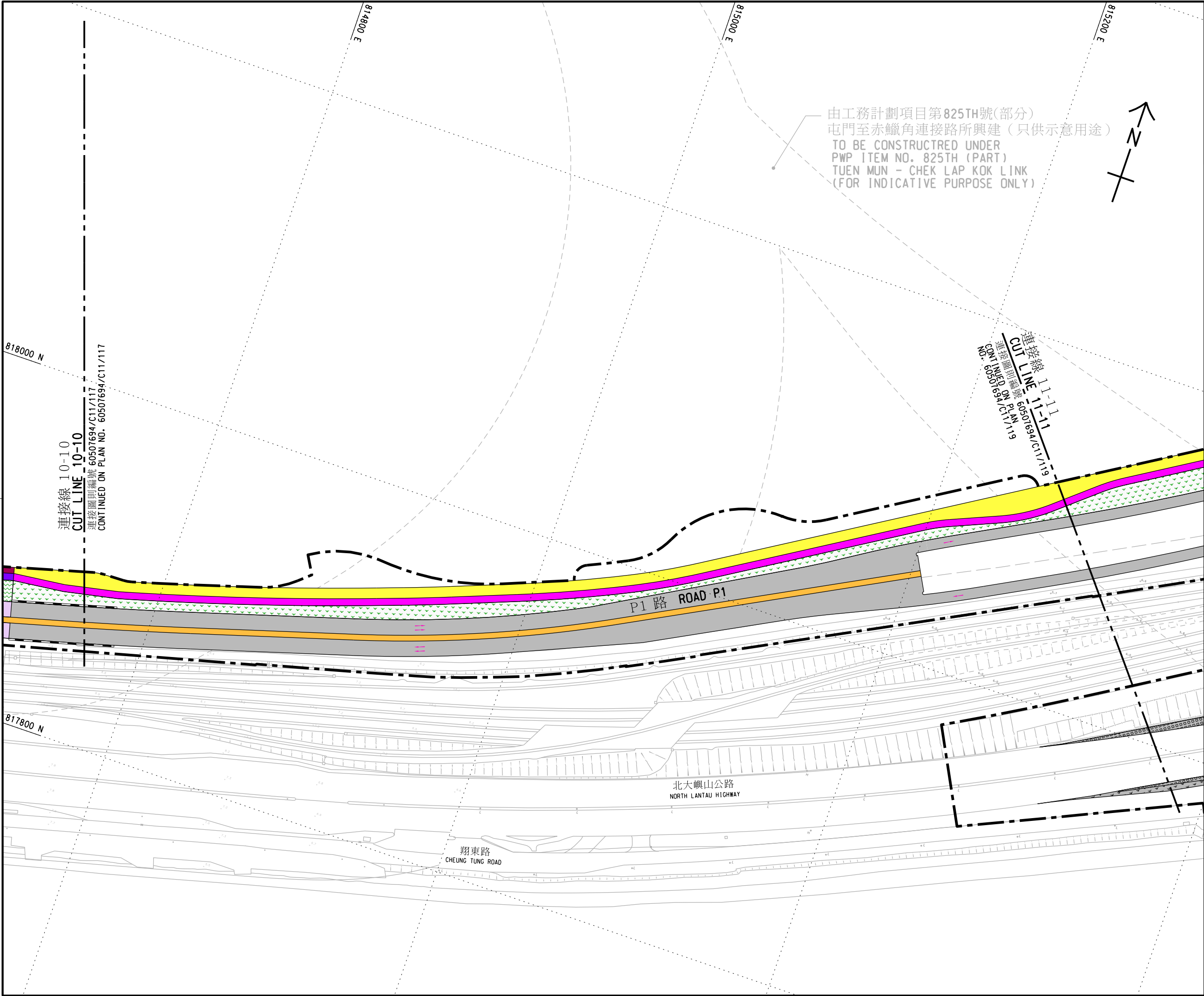


Plot File by: aecom\p05\2018
PATH p\1\HKSH11\AP096.aecom\line\local\AECOM_DS02_AS\Documents\60507694 TCNTE - D&C\CAD PRODUCTION\DRAWING\REPORT\C11\118.dgn



索引圖 KEY PLAN
比例 SCALE 1 : 50000

註釋:
NOTES:

- 除在其他方面指定外，所有量度以米為單位。
ALL DIMENSIONS ARE IN METRES UNLESS OTHERWISE SPECIFIED.
- 所有水平均為約數，以米為單位，並在香港主水平基準以上(+)或以下(-)。
ALL LEVELS ARE APPROXIMATE VALUES AND IN METRES ABOVE (+) OR BELOW (-) HONG KONG PRINCIPAL DATUM.
- 如有需要，施工區界限內部分現有地面行車道、行人隧道、地面行人路、地面單車徑、地面美化市容地帶、高架美化市容地帶和路中預留帶/安全島或會分階段暫時封閉。
SECTIONS OF THE EXISTING AT GRADE CARRIAGEWAYS, SUBWAY, AT GRADE FOOTPATHS, AT GRADE CYCLE TRACK, AT GRADE AMENITY AREAS, ELEVATED AMENITY AREAS AND CENTRAL RESERVES/REFUGE ISLANDS WITHIN THE LIMIT OF WORKS AREA MAY BE TEMPORARILY CLOSED IN PHASES AS AND WHEN REQUIRED.
- 如有需要，土力、斜坡穩固、渠務、污水收集系統、水務、公用設施和環境美化工程或會在施工區界限內進行。
GEOTECHNICAL, SLOPE STABILIZATION, DRAINAGE, SEWERAGE, WATER, UTILITIES AND LANDSCAPING WORKS MAY BE CARRIED OUT WITHIN THE LIMIT OF WORKS AREA AS AND WHEN REQUIRED.
- 圖例的詳細資料請參照圖則編號 60507694/C11/110。
DETAILS OF LEGENDS ARE SHOWN ON PLAN NO. 60507694/C11/110.

工程名稱 PROJECT TITLE	
工務計劃項目第7786CL號 東涌新市鎮擴展 (東涌東及P1路 (東涌東至大蠔段) 道路工程)	
PWP ITEM NO. 7786CL TUNG CHUNG NEW TOWN EXTENSION (TUNG CHUNG EAST AND ROAD P1 (TUNG CHUNG EAST TO TAI HO SECTION) ROAD WORKS)	
圖則名稱 PLAN TITLE	
根據《道路 (工程、使用及補償) 條例》 (第370章) 而在憲報公布之圖則 PLAN FOR GAZETTING UNDER ROADS (WORKS, USE AND COMPENSATION) ORDINANCE (CHAPTER 370)	
圖則編號 PLAN NO.	比例 SCALE
60507694/C11/118	A1 1:1000
辦事處 OFFICE	可持續大嶼辦事處 SUSTAINABLE LANTAU OFFICE
 土木工程拓展署 CIVIL ENGINEERING AND DEVELOPMENT DEPARTMENT	